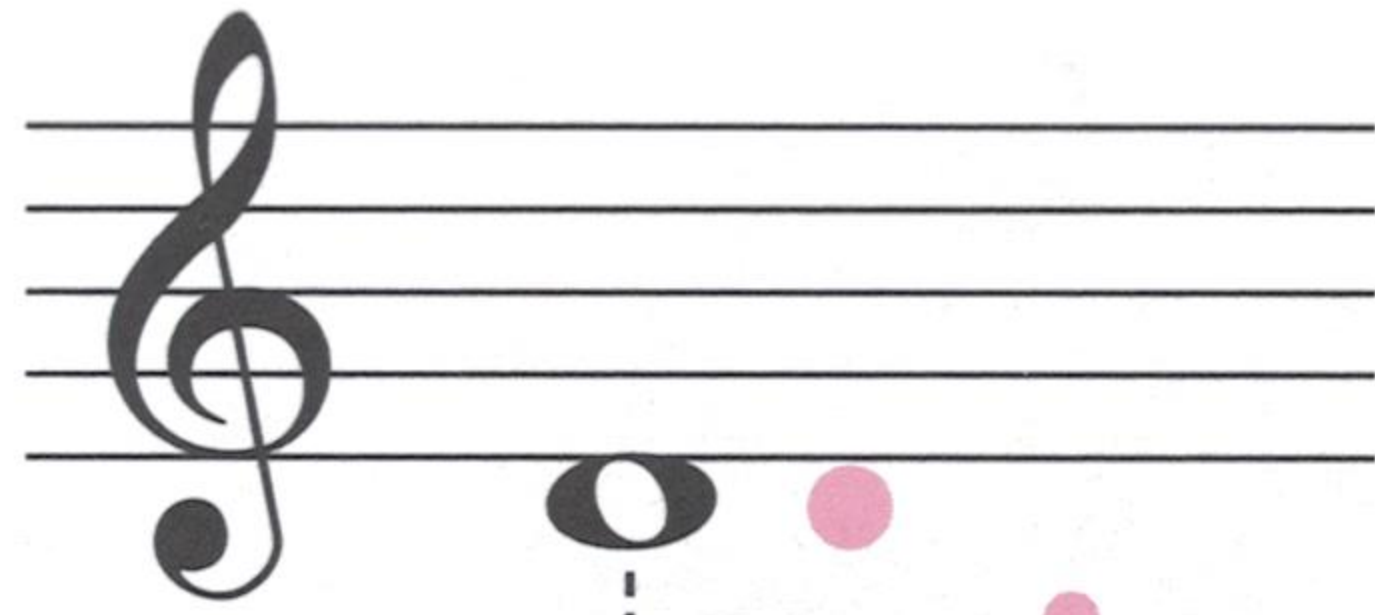
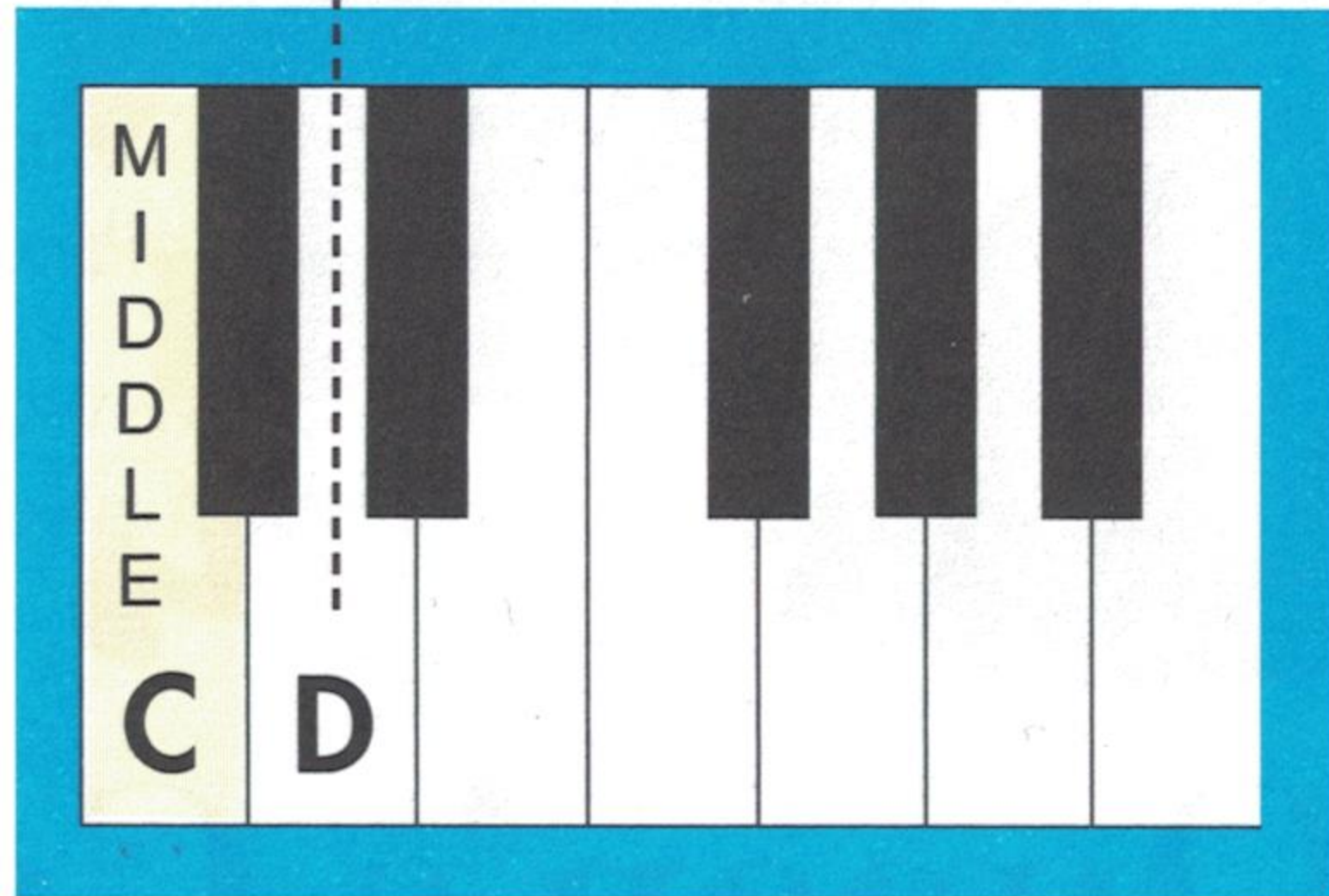


# Treble Clef D



Treble D looks a little like Middle C—except there's no whisker! Is D a LINE or SPACE note?



## Tips from Katie:

1. Your teacher will make up a rhythm(s) on **treble clef D**. Copy it back. Now do one for your teacher.
2. Play the piece. Sing letter names, then words.

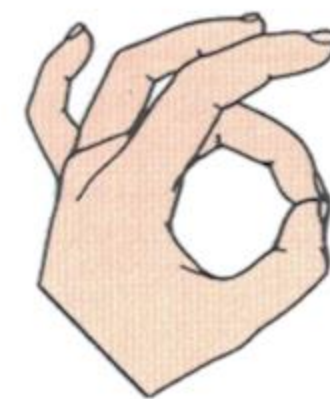
# 7 Tub Time!

**Brightly** **repeated notes**

1 2

*p* Tuck - er dog, where are you? You're hid - ing from me. Woof!

Prepare L.H. finger 3 on the **LOWEST F**.



Play the **LOWEST F** on the piano.



5

Circle the **repeated notes** to the end.

*p* Tuck - er, time for your bath. That's your tail I see. Woof!

9

*f* Tuck! Woof! Come! Woof! Time to take your bath. Woof!

*f* E 3

E 3

E 3



Now play *Tub Time* using **R.H. fingers 2 and 3** on Middle C and D keys.  
 Note: R.H. finger 2 will start on Middle C.

